

**SOME NEW EURYMELIDS FROM AUSTRALIA AND NEW GUINEA
(HOMOPTERA, JASSOIDEA)**

By J. W. EVANS*

Communicated by D. C. Swan

[Read 7 August 1947]

A collection of Homoptera recently sent me by Mr. D. C. Swan included representatives of eight species of Jassoids belonging to the family Eurymelidae, which he had collected in New Guinea during the war. Five of these species are described below. Of the remainder, one, *Eurymeloides nigra* Evans, is confined to New Guinea, and two, *Eurymeloides punctata* Sign. and *E. adspersa* Sign., both of which are well-known Australian species, are recorded from New Guinea for the first time. The host plants were species of *Eucalyptus* and *Melaleuca*.

Of the remaining four new species of Eurymelids described below, the most distinctive is *Ipoella davisi*, which was collected in North-west Australia by the late Dr. Consett Davis, whose tragic death in 1944 was an irreparable loss to entomology in Australia.

***Eurymeloides sogerensis* sp. nov.**

Length, 5 mm. *Head*, face evenly dark brown, but for the outer margins of the lora and maxillary plates, which are cream. *Pronotum* brown mottled with pale greyish-brown. *Scutellum* dark brown. *Tegmen* dark brown, irregularly mottled with dark grey. *Thorax*, ventral surface and legs, dark brown. *Male Genitalia*, aedeagus as in fig. 1, A.

Holotype, ♂, from Sogeri, New Guinea (D. C. Swan, 5/45), in the British Museum. Paratypes in the South Australian Museum.

***Eurymeloides motuana* sp. nov.**

Length, 7 mm. *Head* dark nigger or reddish-brown mottled with yellow; ante-clypeus dark brown; lora and adjacent parts of the maxillary plates yellowish or pale brown. *Pronotum* nigger or reddish-brown mottled with ivory. *Scutellum*, the angles black, centrally dark brown with oval yellowish markings. *Tegmen* black with two irregular white, transverse fasciae and with a white marking at the distal apex of each anal vein. *Legs* brown, the bases of the spines and the proximal tarsal segment of the hind tibia, white. *Male Genitalia*, aedeagus as in fig. 1, B.

Holotype, ♂, from Port Moresby, New Guinea (D. C. Swan, 5/45), in the British Museum. Paratypes in the South Australian Museum.

***Eurymeloides nigrobrunnea* sp. nov.**

Length, 7.2 mm. *Head*, maxillary plates pale brownish-yellow; ante-clypeus lora and fronto-clypeus pale reddish-brown; vertex dark brown mottled with apricot yellow. *Pronotum* and *Scutellum* chestnut brown or brown mottled with yellow. *Tegmen* black with two white fasciae, each with a large irregular black marking, anal veins distally white. *Legs*, femora pale brown, tibiae dark brown, the bases of the spines and the proximal tarsal segment, white. *Male Genitalia*, aedeagus as in fig. 1, C.

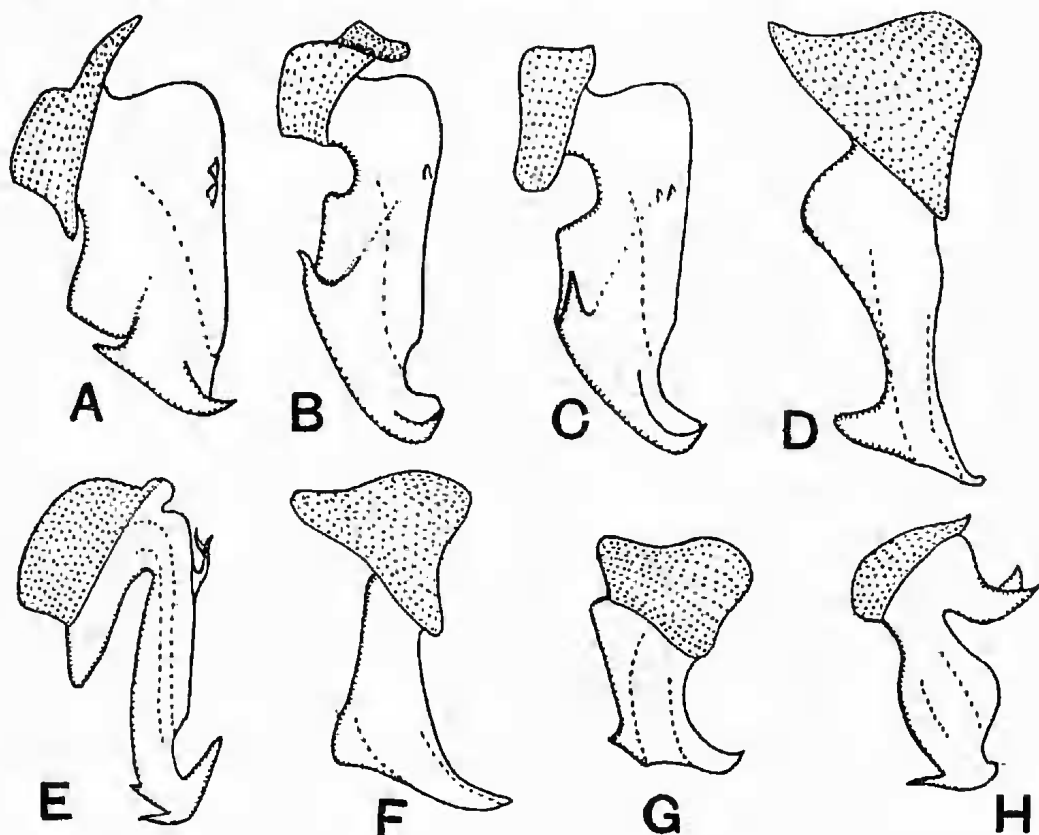
Holotype, ♂, from Port George, North-west Australia (C. Davis, 5/43), in the British Museum. Paratypes in the South Australian Museum.

* Imperial Institute of Entomology.

Ipoides brunomaculata sp. nov.

Length, 5 mm. *Head*, face, but for the vertex, yellowish-ivory with a median longitudinal dark brown stripe. Vertex pale brown irregularly mottled with chestnut brown. Crown and *pronotum* pale chestnut brown mottled with yellowish-ivory. *Scutellum* deep chestnut brown with two pale semi-circular markings. *Tegmen* pale hyaline brown with irregular white markings; veins white, brown in part. *Legs* very pale brown. *Male Genitalia*, aedeagus as in fig. 1, F.

Holotype, ♂, from Port Moresby, New Guinea (D. C. Swan, 5/45), in the British Museum. Paratypes in the South Australian Museum.

*Ipoides melaleuca* sp. nov.

Length, 5 mm. *Head*, face, maxillary plates greyish, the rest of the face pale greyish-brown evenly mottled with dark brown. Crown, *pronotum* and *scutellum*, greyish, sparsely mottled with brown. *Tegmen* very pale hyaline brown; veins brown with white bars. *Legs*, femora dark brown, tibiae pale brown. *Male Genitalia*, aedeagus as in fig. 1, G.

Holotype, ♂, from Sogeri, New Guinea (D. C. Swan, 5/45), in the British Museum. Paratypes in the South Australian Museum.

Anipo pallescens sp. nov.

Length, 5.5 mm. *Head*, face, maxillary plates, lora and fronto-clypeus laterally, ivory partially suffused with apricot; ante-clypeus, the fronto-clypeus

medially and the vertex, deep coffee brown with pale oval markings. Crown and pronotum pale greyish-brown mottled laterally with dark brown. Scutellum, anterior lateral angles dark brown, the remainder pale brown. Tegmen pale hyaline brown with evenly distributed circular colourless hyaline areas. Thorax, ventral surface and legs marked with a pattern of pale and dark brown. Male Genitalia, aedeagus as in fig. 1, E.

Holotype, ♂, from Sogeri, New Guinea (D. C. Swan, 5/45), in the British Museum. Paratypes in the South Australian Museum.

***Ipoella davisii* sp. nov.**

Length, 5 mm. *Head*, face almost flat; ante-clypeus narrowly depressed anteriorly, dark brown; fronto-clypeus medially dark brown, shading to pale brown, laterally ivory; lora brown adjacent to the ante-clypeus, laterally ivory; maxillary plates ivory anterior to the antennae, dark brown beneath the eyes; vertex chestnut and very dark brown, posteriorly ivory. Crown brown with irregular dark brown markings. Pronotum buff mottled with brown. Scutellum dark brown. Tegmen hyaline, the costal margin and the apex smoky brown, the remainder dark brown with a broad proximal white fascia and white markings at the apex of the first anal vein. Some specimens have also a distal white fascia. Male Genitalia, aedeagus as in fig. 1, D.

Holotype, ♂, from Isdell River, Walcott Inlet, North-west Australia (C. Davis, 9/43 on *Ficus*), in the British Museum. Paratypes in the South Australian Museum.

***Bakeriola tasmaniensis* sp. nov.**

Length, 5 mm. *Head*, face black sparsely mottled with brown but for the outer margins of the maxillary plates, which are white and the lora, which are cream, partially suffused with pale brown. Crown of head and pronotum pale brown mottled with dark brown. Scutellum dark brown. Tegmen, clavus concolorous with the pronotum, the remainder hyaline brown with circular and irregularly shaped colourless area. Legs dark brown but for the coxae, the tarsi, and both ends of the tibiae and femora, which are pale brown. Male Genitalia, aedeagus as in fig. 1, H.

Holotype, ♂ from Risdon, Tasmania (J. W. E., 4/39), in the British Museum. Paratypes in the South Australian Museum.

***Bakeriola rubra* sp. nov.**

Length, 4.8 mm. General coloration dark brown. *Head*, face evenly convex, dark brown mottled with reddish-brown. Crown and pronotum irregularly mottled with dark brown and reddish-brown. Scutellum dark brown, mottled antero-medially with pale reddish-brown. Tegmen, hyaline dark and reddish-brown with oval white markings. Legs reddish-brown, hind tibia with three spurs and several spines.

Holotype, ♂, from Moolooka, Queensland (4/44, E. F. Riek), in the British Museum. Paratype in the South Australian Museum.